

# MetaView Explorer

MetaView Explorer is a Java-based client that significantly enhances your ability to reduce operational costs even as you introduce compelling new services into your network.

As powerful in its management capabilities as it is intuitive, MetaView Explorer provides provisioning, configuration, fault reporting, statistics and troubleshooting services across the entire Metaswitch product range, including MetaSphere, CommPortal, Universal Media Gateway and Media Resource Server.

What's more, it also offers a number of unique capabilities that address the particular challenges of trouble-shooting, device configuration and service quality control.

## Powerful Management Tools

MetaView Explorer delivers a suite of very powerful features that simplify the management of your network.

### Logical, Hierarchical View

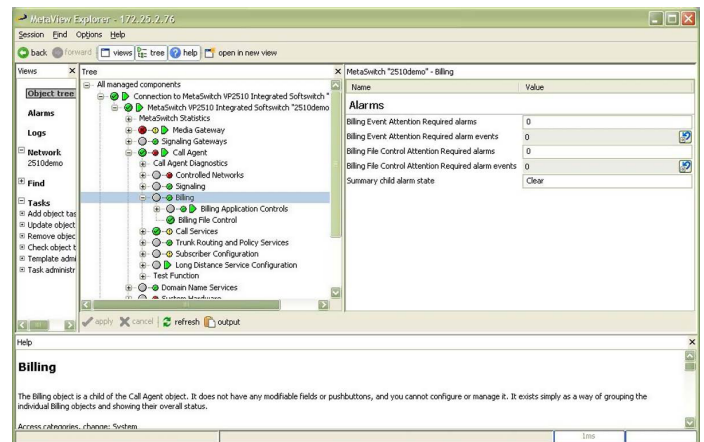
Presents the entire network as a logical hierarchy, from the top level of network elements down to individual subscribers.

### Advanced Diagnostics

These include real-time monitoring of statistics and resource utilization with configurable alarm thresholds. In addition, MetaView Explorer allows administrators to store the diagnostics for all calls for later analysis.

### Dynamic Scripting

A Java/Python-based real-time scripting interface allows users to easily and quickly handle bulk provisioning and management tasks.



*MetaView Explorer makes it easy to manage a Metaswitch network*

## Network-Wide Fault Management

MetaView Explorer displays the alarm reports collected, and correlates and reports alarms across multiple MetaSphere application server, media gateway, media resource, and signaling gateway components, in addition to selected third-party equipment. MetaView Explorer both orders and displays this crucial information.

## “Out-of-the-box” Integrated Provisioning

Rapidly and easily deploy new services on Metaswitch platforms without the cost of interfacing multiple systems into a third-party Network Management System.

## Profiles and Templates

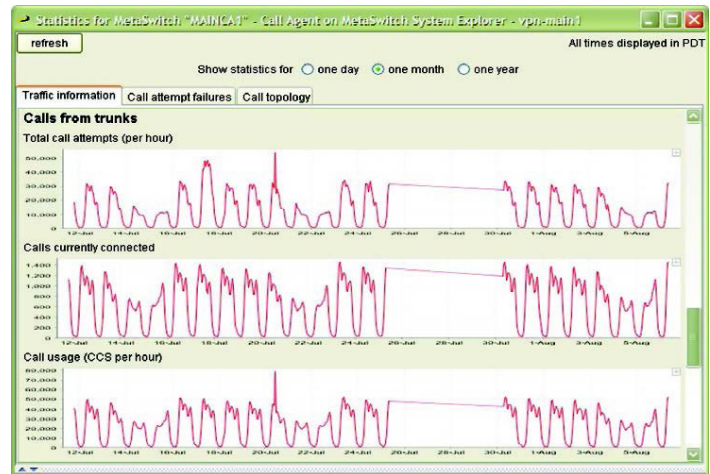
Subscribers are easily provisioned using customized templates that simplify provisioning with wizard-like workflows. Persistent profiles ensure that any updates are automatically applied to selected subscribers.

## Bullet-Proof Security

The highest standards of security are applied throughout MetaView with session encryption, multiple account types, secure password rules, and a comprehensive audit trail.

## Voice Quality Monitoring

MetaView Voice Quality Monitoring utilizes a graphical user interface (GUI) panel in MetaView Explorer to represent your IP network. Configured network nodes and their interconnecting lines represent call volume and real-time voice quality statistical values.



Ack'd	Summary	Switch	Group	Element Name
	Link 0 is no longer in service	planetac	Media Gateway	Media Gateway
N	A remote device that Metaswitch accesses via a configured SIP binding has planedao	planedao	Configured SIP Bindings	Configured SIP Binding "Failed app server"
N	Link has gone out of service	planedao	Signaling Links	Link 0
N	Link has gone out of service	planedao	Signaling Links	Link 0 "planedaoLink_0"
N	Link has gone out of service	planedao	Signaling Links	Link 1 "planedaoLink_1"
N	Alarm condition detected	planedao	System Hardware	AL4000 Alarm Card
N	ISUP remote signaling destination is unavailable due to the lack of an avail planedao	planedao	ISUP	ISUP (1-1-15) Remote Signaling Destination 7-1-1
N	ISUP remote signaling destination is unavailable due to the lack of an avail planedao	planedao	ISUP	ISUP (1-1-15) Remote Signaling Destination 8-1-1
N	ISUP remote signaling destination is unavailable due to the lack of an avail planedao	planedao	ISUP	ISUP (1-1-15) Remote Signaling Destination 9-1-1
N	All EOC and/or all TMC Control Channels are Out-Of-Service	planedao	IDTs	IDT "Alcatel IDT" (AALM1)
N	All EOC and/or all TMC Control Channels are Out-Of-Service	planedao	IDTs	IDT "Adtran T1000" (AALM2)
N	All EOC and/or all TMC Control Channels are Out-Of-Service	planedao	IDTs	IDT "Lucent DLT" (AALM3)
N	A remote device that Metaswitch accesses via a configured SIP binding has planedao	planedao	Configured SIP Bindings	Configured SIP Binding "TDP temp"
N	A remote device that Metaswitch accesses via a configured SIP binding has planedao	planedao	Configured SIP Bindings	Configured SIP Binding "TDP temp"
N	A remote device that Metaswitch accesses via a configured SIP binding has planedao	planedao	Configured SIP Bindings	Configured SIP Binding "TDP temp"
N	A Media Gateway is not responding to commands sent by the Metaswitch C planedao	planedao	Subscriber Gateways	Subscriber Gateway "Arspay"
N	A Media Gateway is not responding to commands sent by the Metaswitch C planedao	planedao	Subscriber Gateways	Subscriber Gateway "Omni"
N	A Media Gateway is not responding to commands sent by the Metaswitch C planedao	planedao	Subscriber Gateways	Subscriber Gateway "TDP temp"
N	A Media Gateway is not responding to commands sent by the Metaswitch C planedao	planedao	Subscriber Gateways	Subscriber Gateway "Raden ATA"
N	A Media Gateway has failed or deactivated a port without an instruction to c planedao	planedao	TDM Ports	TDM Port "DS3S17001002"
N	A Media Gateway has failed or deactivated a port without an instruction to c planedao	planedao	Access Devices	Access Device "FEET 01:00000000" (AALM1201)
N	A Media Gateway has failed or deactivated a port without an instruction to c planedao	planedao	TDM Ports	TDM Port "DS3S17001001"
N	A Media Gateway has failed or deactivated a port without an instruction to c planedao	planedao	Access Devices	Access Device "FEET 01:00000000" (AALM1223)
N	A Media Gateway has failed or deactivated a port without an instruction to c planedao	planedao	Access Devices	Access Device "FEET 01:00000000" (AALM1229)

MetaView Explorer makes it easy to manage a Metaswitch network

## Specifications

### Network Management Architecture

---

- 3-tier client / server architecture (managed Network Elements, MetaView Server, MetaView Explorer client)
- FCAPS (fault, configuration, accounting, performance and security) management client for Metaswitch-based networks

### MetaView Explorer Client Overview

---

- Java graphical user interface
- Supported operating systems: Windows XP, Windows Vista, Sun Solaris
- Installable via HTTP from MetaView Server
- Automatic version updates
- Browsable, hierarchical view of entire network with hyperlinks
- Graphical real-time display of network and statistics
- Powerful system-wide search capabilities
- Control of alarms from specified subscribers, trunks and customer premises equipment

### Fault Management

---

- Configurable rules applied on new events
- Log viewer with event filtering
- Configurable severity per log type
- Notifications: audio, pager, email
- Fault correlation
- Logs include: description, cause, effect, recommended action, user comment, related objects and context information

### Configuration Management

---

- Configurable step-by-step Tasks simplify common provisioning and configuration actions
- Objects managed include media gateways, line cards, signaling profiles, call agent, subscribers, access devices
- Persistent subscriber profiles
- Single point of subscriber provisioning for call agent and applications
- Priority user access for critical tasks allows you to temporarily suspend less important MetaView operations, avoiding delay or distraction to your engineers
- Customizable Help pages allow your administrators to record their own annotations and, optionally, share them across your organization

### Performance Management

---

- Voice quality monitoring
- Trunk utilization reports
- Configurable alarm thresholds

### Security

---

- RSA encryption between servers
- Authentication certificates: X.509
- Validation: ITU-T X.690
- Password complexity check
- MetaView Explorer client identity validation
- Audit trail
- Pre-defined user security levels : 15
- Configurable user security levels: Choice of 'none', 'read-only', or 'changeable' on 18 different categories for millions of different combinations

### Reliability

---

- MetaView Server not in call processing path
- Standby server option
- Automated backup schedule